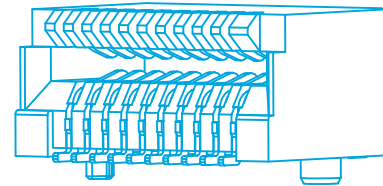
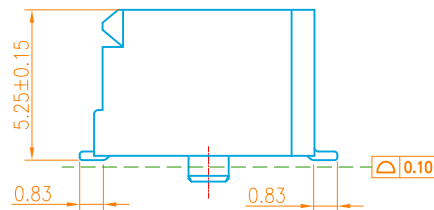


RECOMMENDED P.C.B LAYOUT(COMPONENT SIDE)



3D VIEW

NOTES:

- HUOSING: LCP HIGH-TEMP THERMOPLASTIC UL94V-0 COLOR:BLACK
- TERMINAL:PHOSPHOR BRONZE
PLATING:GOLD FLASH IN CONTACT AREA/100μ"MIN.MATTE TIN
PLATE IN SOLDER AREA.OVERALL 50μ" MIN. NICKEL.

- 3.CODING INFORMATION: LB700-QxxS-BOR
- PACKING: R: CARRIER REEL
 - STANDARD TYPE
 - COLOR:BLACK
 - SOCKET
 - PIN
 - PLATING: G:GOLD FLASH
 - Q:GOLD FLASH and TIN
- 0.8 BTB
- LXWCONN BTB CONNECTOR SERIES

NO.of contacts	Dimensions			
	A.	B.	C.	D.
10	7.0	3.2	5.4	5.6
20	11.0	7.2	9.4	9.6
30	15.0	11.2	13.4	13.6
40	19.0	15.2	17.4	17.6
50	23.0	19.2	21.4	21.6
60	27.0	23.2	25.4	25.6
70	31.0	27.2	29.4	29.6
80	35.0	31.2	33.4	33.6
100	43.0	39.2	41.4	41.6

CUSTOMER



连兴旺电子(深圳)有限公司

LXWCONN ELECTRONICS (SHENZHEN) CO., LTD

一般公差
GENERAL TOLERANCE

制图 (DR): Kavin
2018.01.09

品名(TITLE): 0.8mm BTB SOCKET

版本 (REV) A

审核 (CHKD):

料号 (PART NO): LB700-QxxS-BOR

修订 (REV)	修改摘要 (REVISION DESCRIPTION)	签名 (SIGNATURE)	日期 (DATE)

比例 (SCALE)	单位 (UNITS)	张数 (SHEET)	图幅 (SIZE)
1:8	mm	1 OF 1	A4

核准 (APPD):

